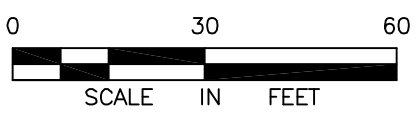
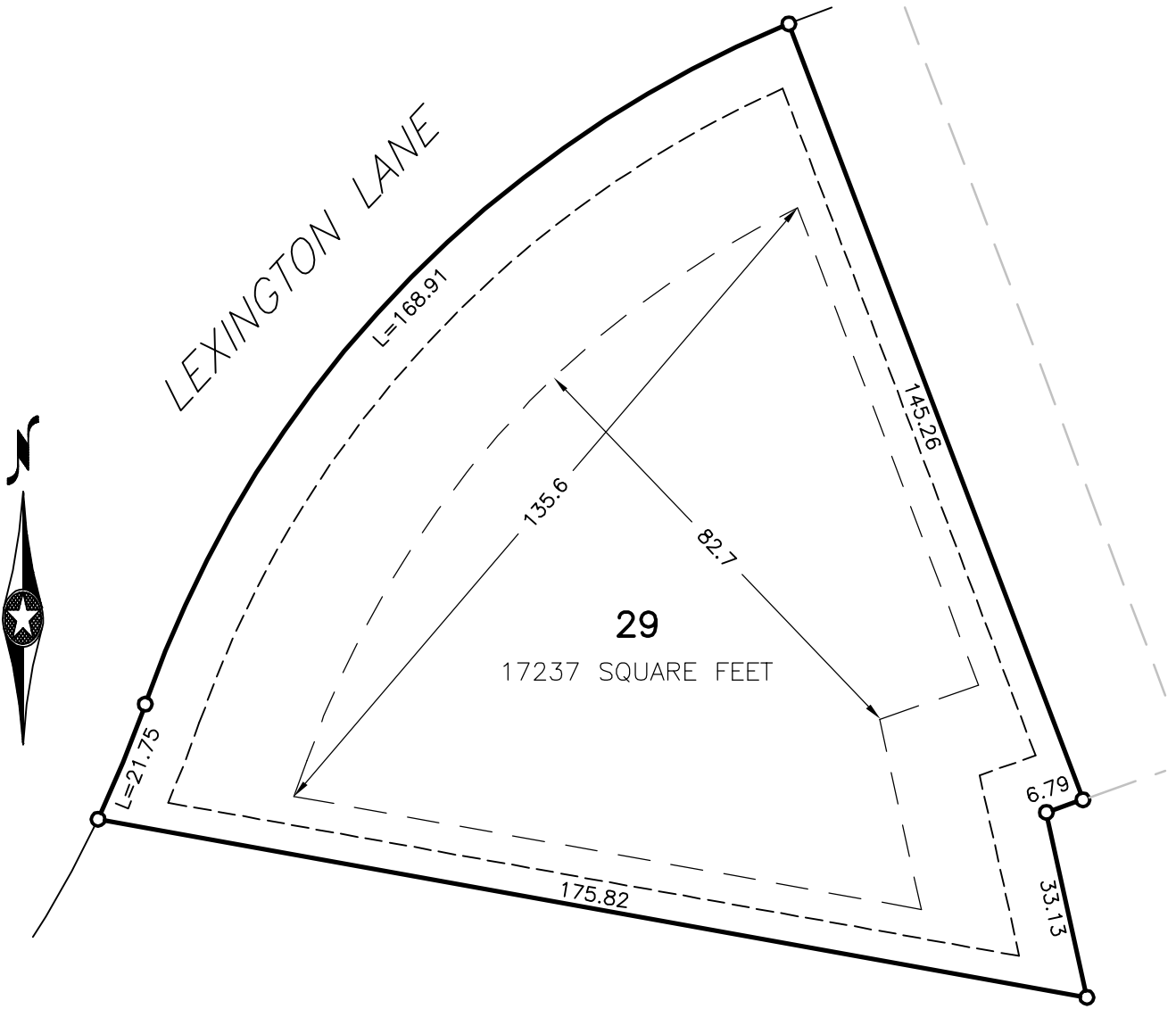


# THE LANDING NORTH PHASE 1

## LOT 29, BLOCK 3



### LEGEND

- 3/4" IRON PIPE MONUMENT SET MARKED BY REG. NO. 19789
- SETBACK LINE
- EASEMENT LINE

©Bolton & Menk, Inc. 2007 All Rights Reserved

**LOT SKETCH**  
CITY OF NORTH MANKATO, MINNESOTA

LOT 29, BLOCK 3, THE LANDING NORTH  
PHASE 1, NICOLLET COUNTY



**BOLTON & MENK, INC.**  
Consulting Engineers & Surveyors

1960 PREMIER DRIVE, MANKATO, MN 56001 (507) 625-4171  
MANKATO, MN FAIRMONT, MN SLEEPY EYE, MN BURNSVILLE, MN  
WILLMAR, MN CHASKA, MN RAMSEY, MN AMES, IA

FOR: KWS, LLC

I:\PRIV\M3338252\LOT SKETCH\BLOCK 3 LOT 29.DWG 11-27-2007 12:04p.m.