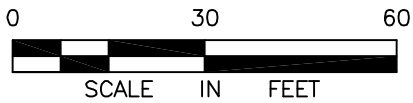
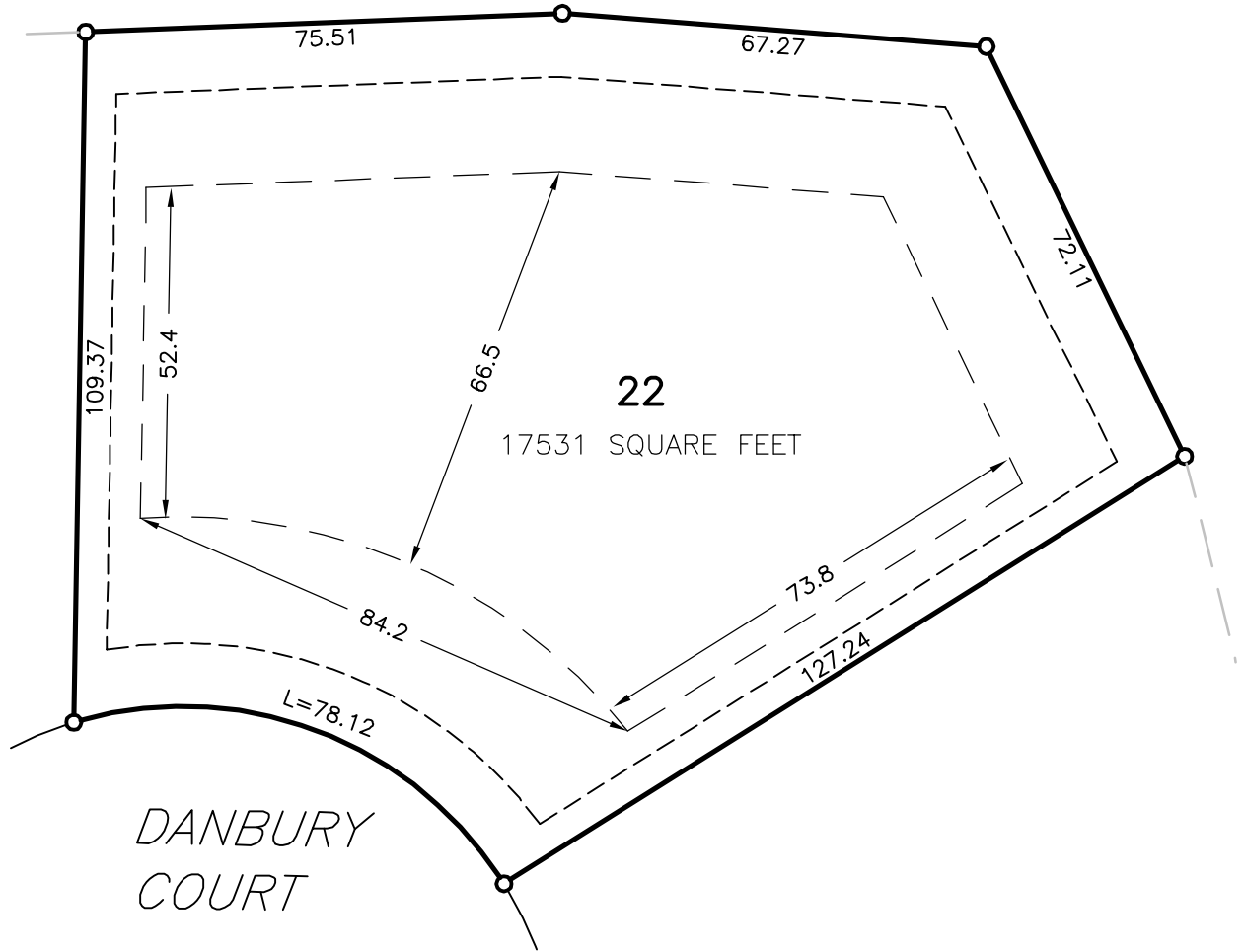


THE LANDING NORTH PHASE 1

LOT 22, BLOCK 3



LEGEND

- 3/4" IRON PIPE MONUMENT SET MARKED BY REG. NO. 19789
- SETBACK LINE
- EASEMENT LINE

©Bolton & Menk, Inc. 2007 All Rights Reserved

LOT SKETCH
CITY OF NORTH MANKATO, MINNESOTA

LOT 22, BLOCK 3, THE LANDING NORTH
PHASE 1, NICOLLET COUNTY

BOLTON & MENK, INC.
Consulting Engineers & Surveyors

1960 PREMIER DRIVE, MANKATO, MN 56001 (507) 625-4171
MANKATO, MN FAIRMONT, MN SLEEPY EYE, MN BURNSVILLE, MN
WILLMAR, MN CHASKA, MN RAMSEY, MN AMES, IA

FOR: KWS, LLC

I:\PRIV\M3338252\LOT SKETCH\BLOCK 3 LOT 22.DWG 11-27-2007 11:12a.m.