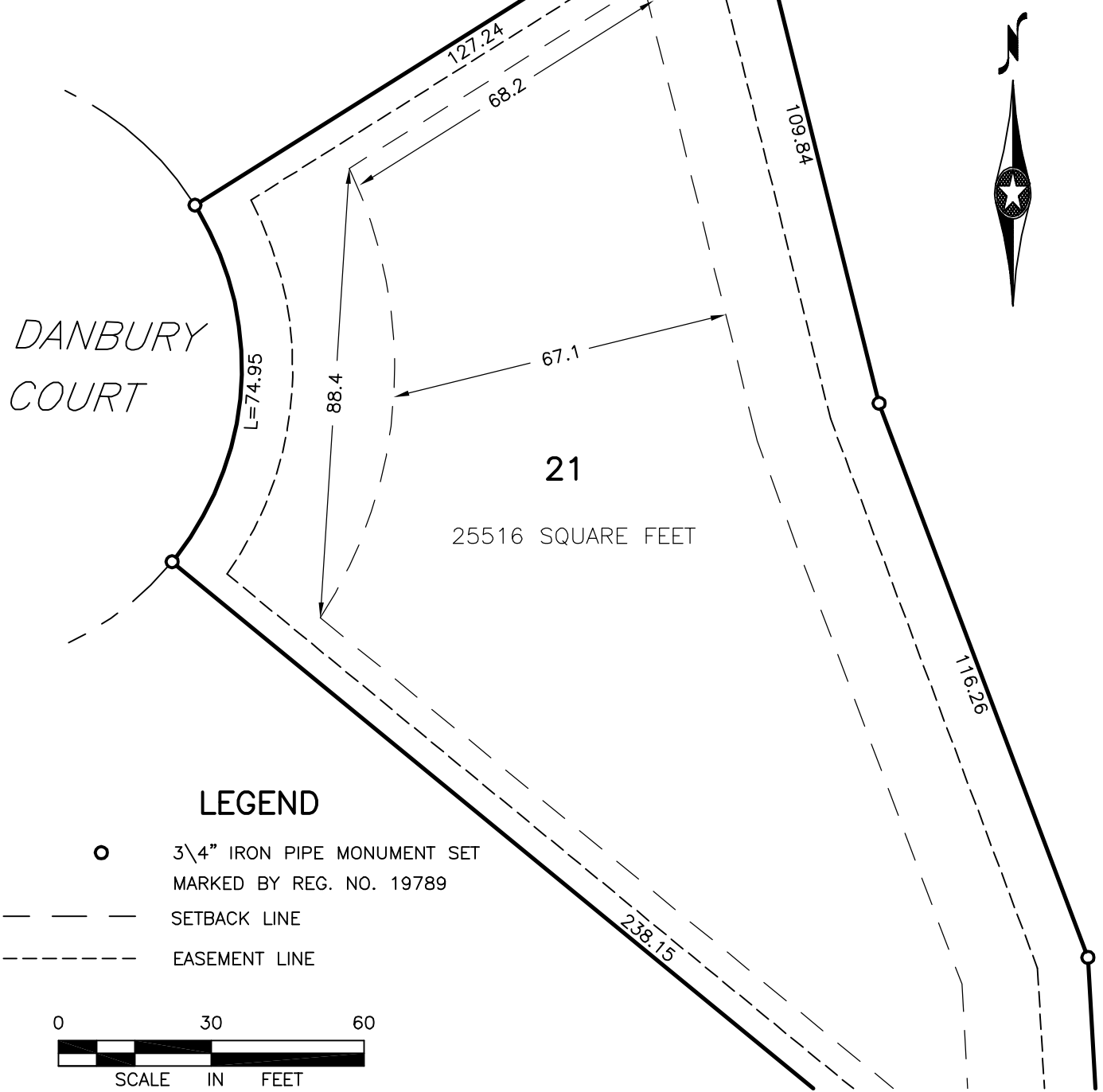
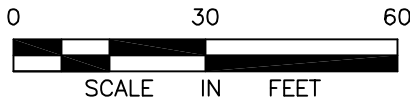


THE LANDING NORTH PHASE 1 LOT 21, BLOCK 3



LEGEND

- 3/4" IRON PIPE MONUMENT SET
MARKED BY REG. NO. 19789
- - - - - SETBACK LINE
- - - - - EASEMENT LINE



©Bolton & Menk, Inc. 2007 All Rights Reserved

LOT SKETCH
CITY OF NORTH MANKATO, MINNESOTA

LOT 21, BLOCK 3, THE LANDING NORTH
PHASE 1, NICOLLET COUNTY

BOLTON & MENK, INC. Consulting Engineers & Surveyors

1960 PREMIER DRIVE, MANKATO, MN 56001 (507) 625-4171
MANKATO, MN FAIRMONT, MN SLEEPY EYE, MN BURNSVILLE, MN
WILLMAR, MN CHASKA, MN RAMSEY, MN AMES, IA

FOR: KWS, LLC



I:\PRIV\M3338252\LOT SKETCH\BLOCK 3 LOT 21.DWG 11-27-2007 11:05a.m.