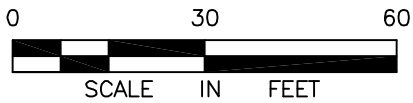
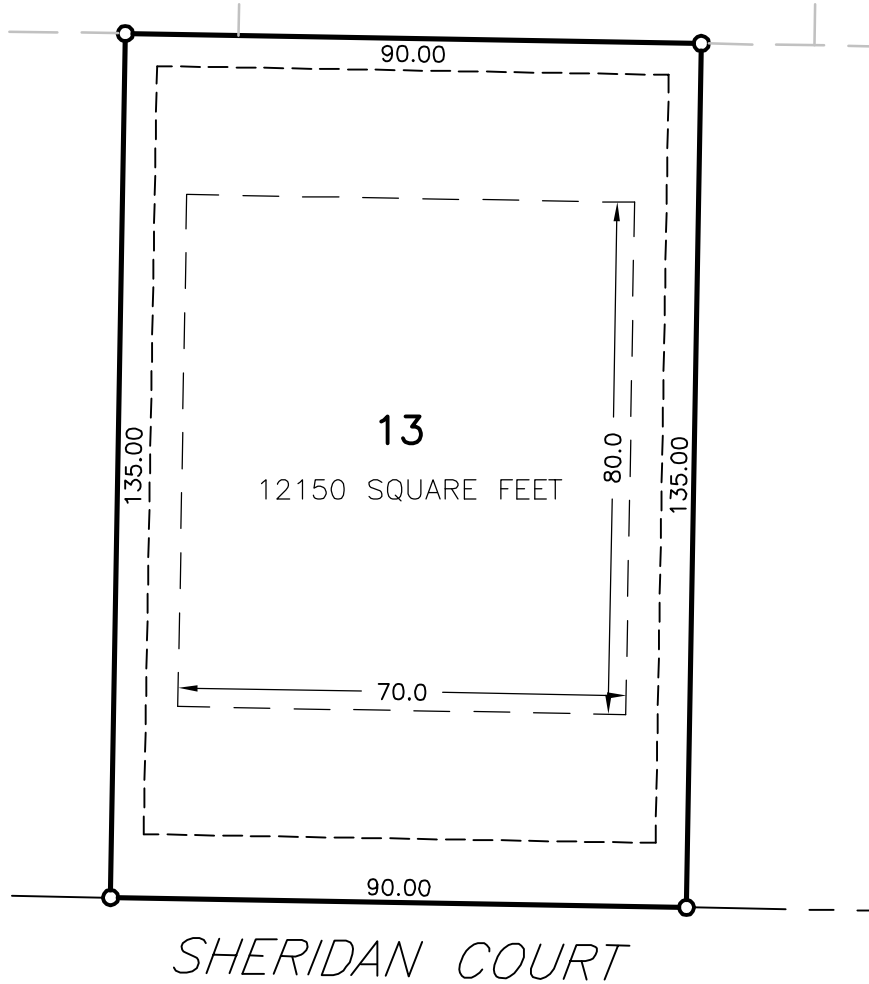


THE LANDING NORTH PHASE 1

LOT 13, BLOCK 2



LEGEND

- 3/4" IRON PIPE MONUMENT SET MARKED BY REG. NO. 19789
- — — SETBACK LINE
- - - - - EASEMENT LINE

©Bolton & Menk, Inc. 2007 All Rights Reserved

LOT SKETCH
CITY OF NORTH MANKATO, MINNESOTA

LOT 13, BLOCK 2, THE LANDING NORTH PHASE 1, NICOLLET COUNTY



BOLTON & MENK, INC.
Consulting Engineers & Surveyors

1960 PREMIER DRIVE, MANKATO, MN 56001 (507) 625-4171
MANKATO, MN FAIRMONT, MN SLEEPY EYE, MN BURNSVILLE, MN
WILLMAR, MN CHASKA, MN RAMSEY, MN AMES, IA

FOR: KWS, LLC

C:\PROGRAM FILES\CGSURVEY 17 FOR AUTOCAD\DRAWING21.DWG 11-26-2007 4:09p.m.